

### Stage management

The stage management team creates a full-scale **ground plan** (supplied by the **scenic designer**) of the production's set on the floor of the rehearsal studio. This representation indicates where all the furniture and other scenic elements will be placed during the production. The director and actors can easily set blocking and get used to the boundaries and limitations of the set.

### Tech Challenge Event: Tape a ground plan

#### *Team event*

*The team gets one try. Only five members of a team may participate.*

In this challenge, a team must successfully use the **scenic designer's ground plan** (provided in packet) to tape out the set in a given space. A **center line, plaster line**, and stage area will be provided. The scale ground plan will be in  $\frac{1}{2}''=1'0''$  and a **scale rule**, tape measures, spike tape, etc. will also be provided. The team must use various colored tapes to signify different parts of the set, i.e. walls, door, platforms. Teams are judged on efficiency and accuracy.

The maximum time allotted is **twelve** minutes. For a video demonstration, visit <http://www.youtube.com/watch?v=NNpgC2-jPP0>.

### Do measurements in advance!

#### Rules and required sequence

1. Leave start line.
2. Grab tape and tape measures.
3. Measure and tape each point for the walls and furniture. Make sure corners are properly formed.
4. Tape out all the lines for the walls and door using one color of spike tape for the door, another for the walls and a third for the platform. The entire perimeter of the platform should be spiked.
5. Go back to start line and say "Done!"

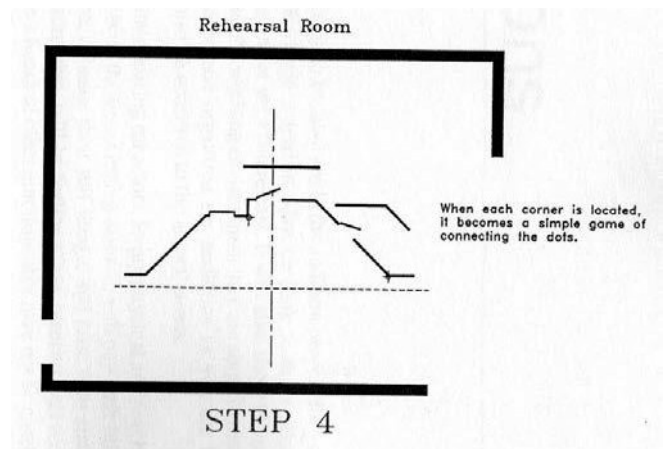
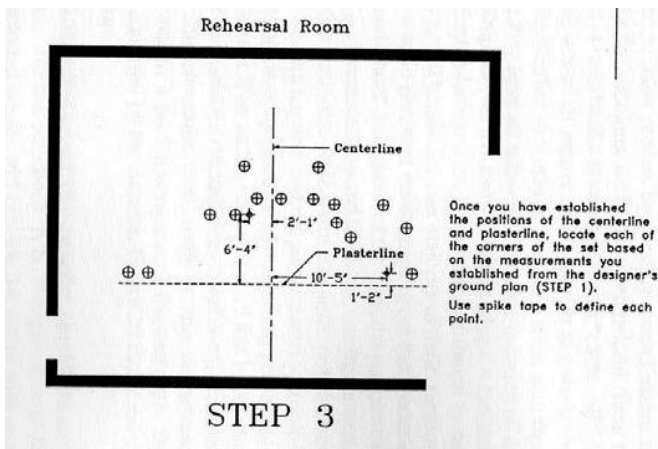
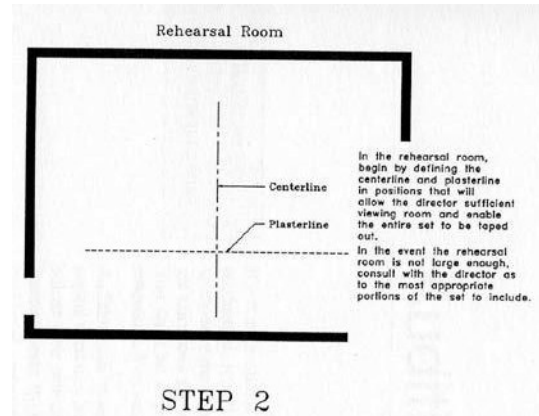
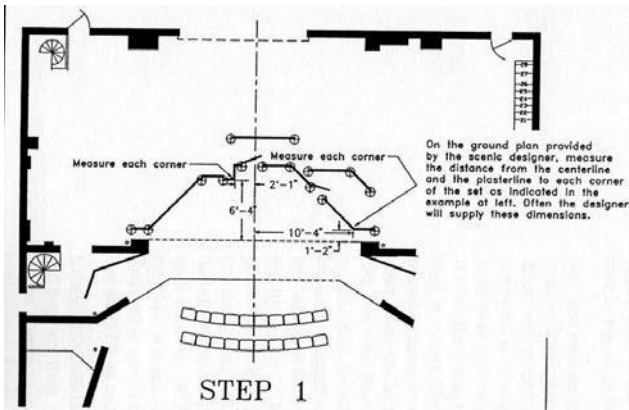
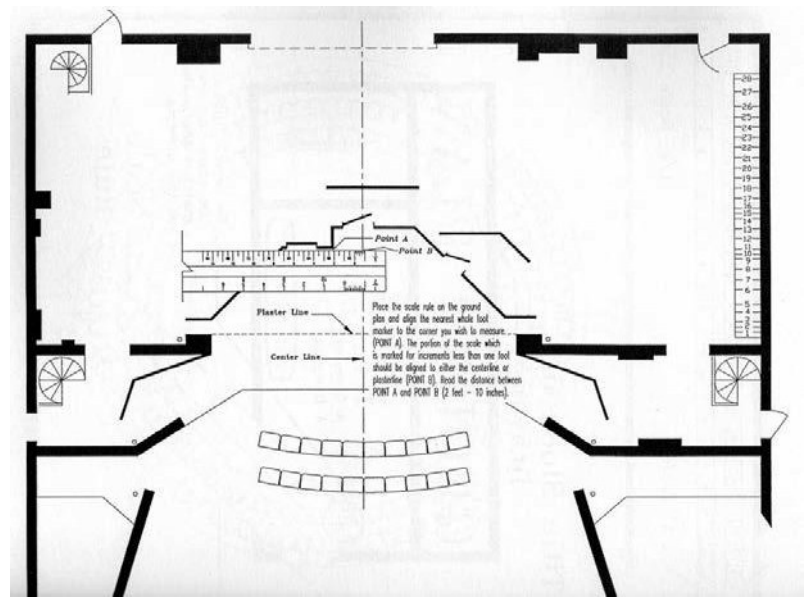
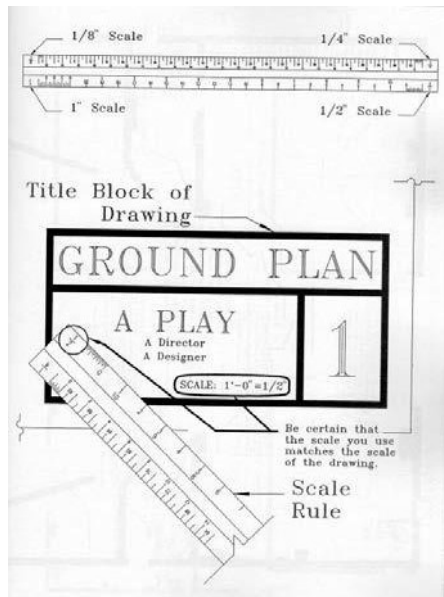
#### Penalties: Tape a ground plan

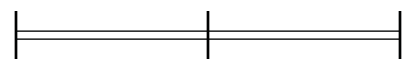
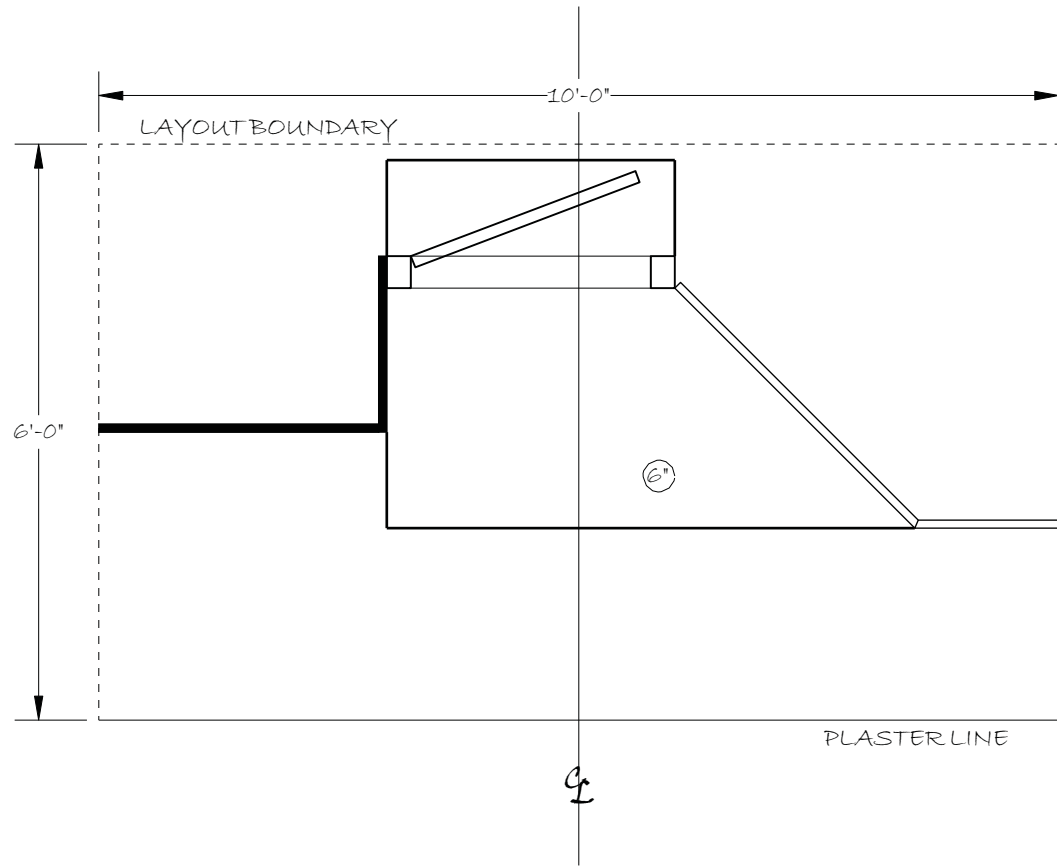
Add the following time for:

Malformed corners (not meeting or overlapping)	5 seconds each
Inaccurate measurements within the shape	15 seconds per angle
Inaccurate placement of the scenic shape within the stage space	15 seconds each
Inaccurate scale translation into the stage space	15 seconds
Incomplete ground plan	10 seconds per missing line
Failure to delineate different scenic elements with different colors	5 seconds
Blatant disregard for the rules	disqualified

# Tech Challenge Guide 2018

Use these diagrams to practice and prepare for this challenge.





PLEASE PRINT AT ACTUAL SIZE TO  
 MAINTAIN ACCURATE SCALE.  
 REFERENCE SCALE ABOVE SHOULD  
 MEASURE 2 INCHES

<b><i>TECH CHALLENGE</i></b>	
<b><i>STAGE MANAGEMENT EVENT</i></b> <b><i>GROUND PLAN</i></b>	
VENUE COLORADO CONVENTION CENTER	
DESIGNED BY LAURA K. LOVE	DRAFTED BY LAURA K. LOVE
SCALE 1/2" = 1'0"	DATE 12/5/2015